

## August 2025 Newsletter – Precinct Village and Carpark

A new entertainment precinct is coming to Moore Park with construction underway for the Precinct Village and Car Park next to Allianz Stadium and the Sydney Cricket Ground.

BESIX Watpac is delivering the contract to build the new Precinct Village and Carpark, which will see the creation of new community and recreational facilities, increased public open space, a children's playground, exciting food and beverage offerings, and an underground carpark.

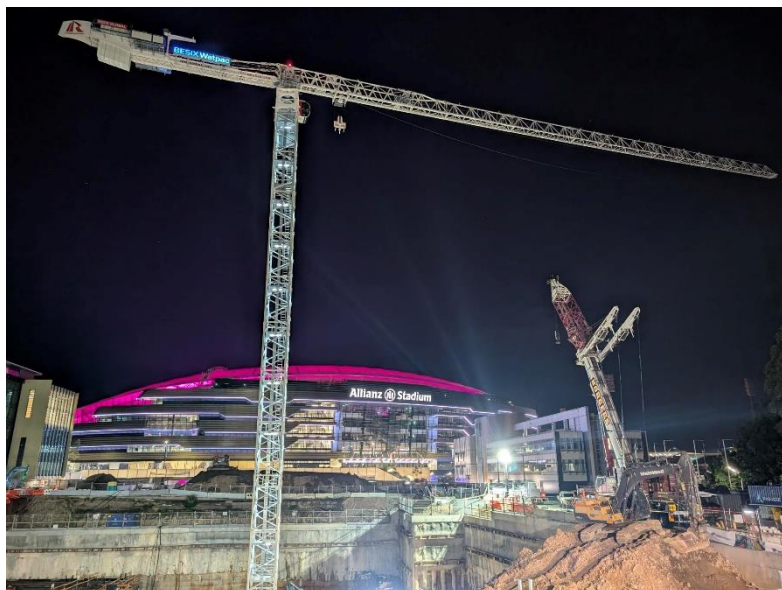
The Precinct Village and Carpark project will replace the existing members car park and connect the sporting and entertainment precinct like never before creating a new destination for residents, fans and visitors.



### AUGUST 2025 PROJECT UPDATE

The project recently celebrated one year since construction commenced on the Precinct Village and Carpark site. A number of milestones have been completed including:

- Installation of over 700 piles which will support the structure of the carpark
- Removal of over 260,000 tonnes of spoil from site
- Installation of tower crane and concrete placing booms which have been used to move materials around the site
- Commencement of the concrete structure of the carpark



Over the next six months, the main focus continues on building the structure for the western carpark. Later in the year, fitout will commence, including installation of essential services such as power, lighting, fire services, mechanical ventilation, and hydraulic drainage.

At the eastern carpark, the last foundations will be installed to support the carpark which will then flow into construction of in-ground services and structural works.

## Six-Month Look Ahead

Activity	September 2025	October 2025	November 2025	December 2025	January 2026	February 2026
<b>Wester Carpark</b>						
Concrete Structure	●	●	●	●	●	●
Services and Finishes				●	●	●
<b>Eastern Carpark</b>						
Foundation Piles	●					
In-ground Services	●	●				
Concrete Structure		●	●	●	●	●

**Thank you for your cooperation and understanding while we complete this essential work.**

For more information about work being carried out by the BESIX Watpac Precinct Village and Car Park team please visit [www.mooreparkprecinctvillage.com](http://www.mooreparkprecinctvillage.com) or email [mooreparkprecinct@besixwatpac.com](mailto:mooreparkprecinct@besixwatpac.com)